

08 Strips & Profiles > Flex Lightline

## 7810/BL



Mains voltage LED strip 4,8W/m.

Supplied in 50m rolls.

Can be cut every 1m.

Requires power supply order code 7814.

Complies with standard EN60598-1 and any other specific standards.



Downloads



Dimensions



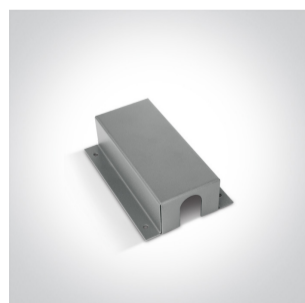
Gallery



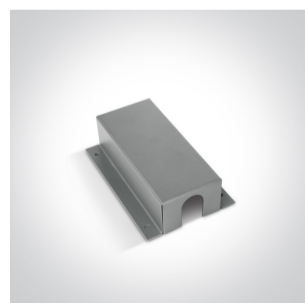
Accessories



7812



7815B/G



7815B/G



7815B/W



7815B/W

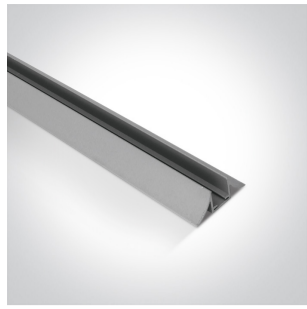




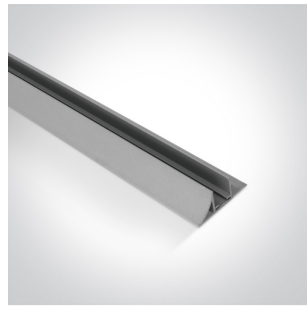
Related items



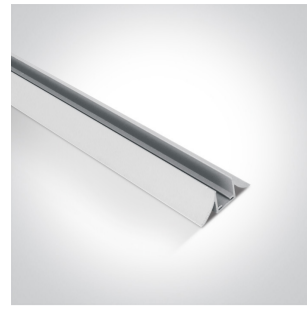
7814



7815/G



7815/G



7815/W



7815/W


Physical Specification

Item Group	08 Strips & Profiles
Family	Flex Lightline
Order Code	7810/BL
Material	Silicone
Shape	Rectangular
Length	50000mm
Width	16mm
Height	27mm
Surface Ceiling	Yes
Surface Wall	Yes
Surface Floor/Ground	Yes
Indoor	Yes
Outdoor	Yes

Electrical Characteristics

Gear	External-Included
Fitting + Driver	
Input Voltage	220-240V
50 Hz	Yes
60 Hz	Yes
Safety Class	
Power(Watts)	4,8W/m
IP Rating	IP54

Light Source
Dimmable
F Mark

LED built in
No



### Fitting

Safety Class
Power(Watts)
IP Rating
Light Source
LED Brand


4,8W/m
IP54
LED built in
Sanan

### Gear

Gear Type
Input Voltage
50 Hz
60 Hz
Power(Watts)
Power Factor
IP Rating
Safety Class
Brand
Protection

Led Driver
220-240V
Yes
Yes
240W
0,9
IP54

0
0

### Illumination Data

Colour Temperature
Illumination Diagram

Blue


### Packing Info

Box Weight
Pcs/Carton

0,57kg
50

Barcode

5291889013969

HS Code

9405403990

Certification & Warranty

Warranty

2 Years

Weee Directive

Yes

switch to  
**one light!**

one  
LIGHT

