

discontinue>discontinueitems

7870/D



Flexible LED light strip, with SMD2216 LEDs, 238LEDs/meter, 19,2W/meter. Supplied in 5 meters roll with white PCB and double adhesive tape for a better fixing.

Can be cut every 2,95cm (7-LED segment).

Requires 24V DC constant voltage LED driver.

Complies with standard EN60598-1 and any other specific standards.



Downloads



Dimensions

Cut every 2,95cm
(7-LED segment)



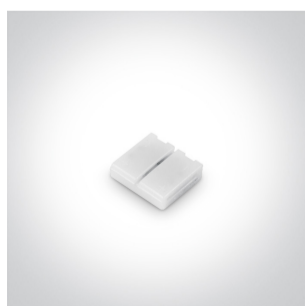
Gallery



Accessories



7835P





7837

Physical Specification

Item Group	discontinue
Family	discontinueitems
Order Code	7870/D
Shape	Rectangular
Length	5000mm
Width	10mm
Surface Ceiling	Yes
Surface Wall	Yes
Surface Floor/Ground	Yes
Indoor	Yes

Electrical Characteristics

Fitting

Input Type	Constant Voltage
Input Voltage	24V DC
Safety Class	
Power(Watts)	19,2W/m
IP Rating	IP20
Light Source	LED built in
LED Type	SMD 2216
LED Brand	Refond
LED Number	238LEDs/m
F Mark	

Illumination Data

Colour Temperature	6000K
Lumen Output	1940lm/m
Light Efficiency	101,04lm/W

CRI

90

Illumination Diagram



Packing Info

Box Length

24cm

Box Width

21,5cm

Box Height

2cm

Box Weight

0.220kg

Pcs/Carton

40

Barcode

5291889031895

HS Code

9405499090

Certification & Warranty

Warranty

5 years

switch to
one light!

one
LIGHT

