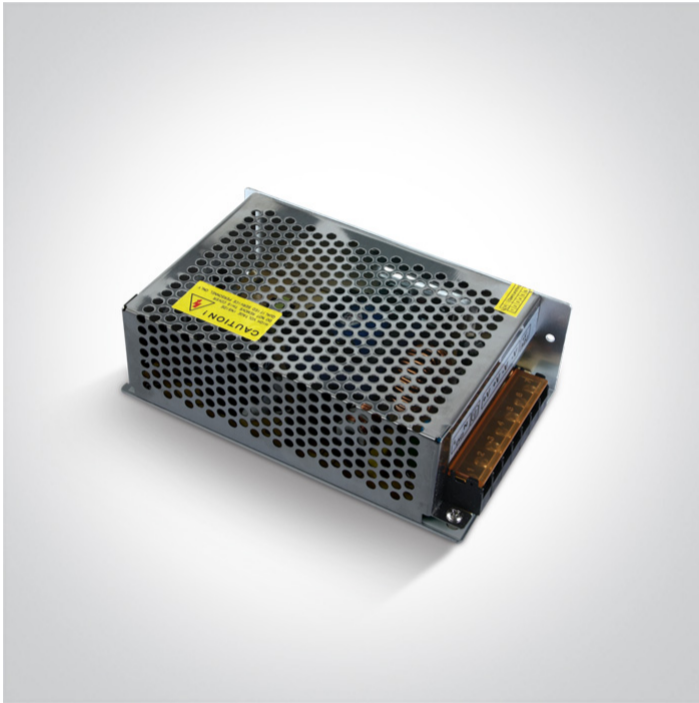


23 LED Drivers>The 24V DC Open Range Constant voltage

## 89200VN



200W 24V DC constant voltage driver, Open Range IP20.

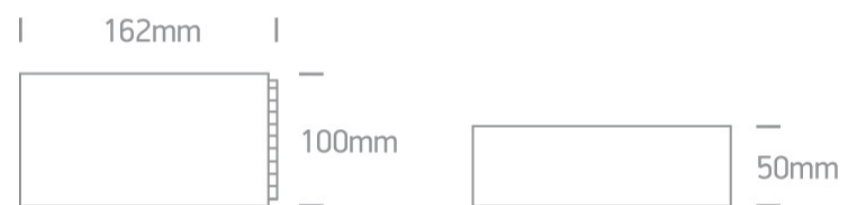
Complies with standard EN61347-1 and any other specific standards.



Downloads



Dimensions




Physical Specification

Item Group	23 LED Drivers
Family	The 24V DC Open Range Constant voltage
Order Code	89200VN
Material	Metal
Shape	Rectangular
Length	162mm
Width	100mm
Height	50mm
Indoor	Yes

Electrical Characteristics

## Gear

Gear Type	Led Driver
Input Voltage	220-240V
50 Hz	Yes
60 Hz	Yes
Power(Watts)	200W
Power Factor	0,95
Constant Voltage	Yes
24 V	Yes
IP Rating	IP20
Safety Class	
Dimmable	No
Ambient Temp	60°C
Operating Temp	70°C
Housing Material	Metal
Output Terminal	Connector
Brand	One Light Ltd
Protection	Short Circuit / Overload / Overheat Protection

## Packing Info

Box Length	17cm
Box Width	10cm
Box Height	10cm
Box Weight	0,45kg
Pcs/Carton	40
Barcode	5291889029373
HS Code	8504408290

Warranty

3 Years

Weee Directive

Yes

switch to  
**one light!**

one  
LIGHT

