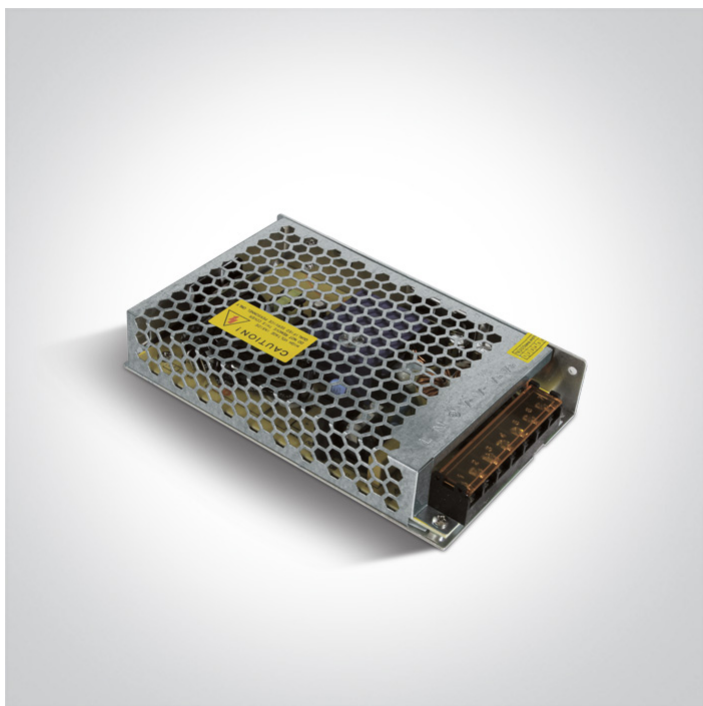


23 Drivers>The 48V DC Open Range Constant voltage

89200XN



200W 48V DC constant voltage driver, IP20.

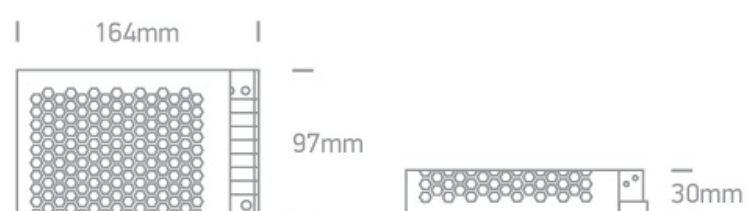
Complies with standard EN61347-1 and any other specific standards.



Downloads




Dimensions



Physical Specification

Item Group	23 Drivers
Family	The 48V DC Open Range Constant voltage
Order Code	89200XN
Material	Plastic
Shape	Rectangular
Length	164mm
Width	97mm
Height	30mm
Indoor	Yes

Electrical Characteristics

Gear	
Gear Type	Led Driver
Input Voltage	100-240V
50 Hz	Yes
60 Hz	Yes
Power(Watts)	200W
Power Factor	0,9
Constant Voltage	Yes
IP Rating	IP20
Safety Class	
Housing Material	Metal
Output Terminal	Connector
Brand	One Light Ltd
Protection	Short Circuit / Overload / Overheat Protection

Packing Info

Box Weight	0.425kg
Pcs/Carton	40
Barcode	5291889072294
HS Code	8504408390

Certification & Warranty

Warranty	3 years
----------	---------

switch to
one light!

one
LIGHT

